

Architect's and Engineer's Specifications

The 943 Series trench insert floor heater is an approved heater to be installed under a floor level grille inside a site-built trench. The construction will allow for many custom and architecturally pleasing applications.

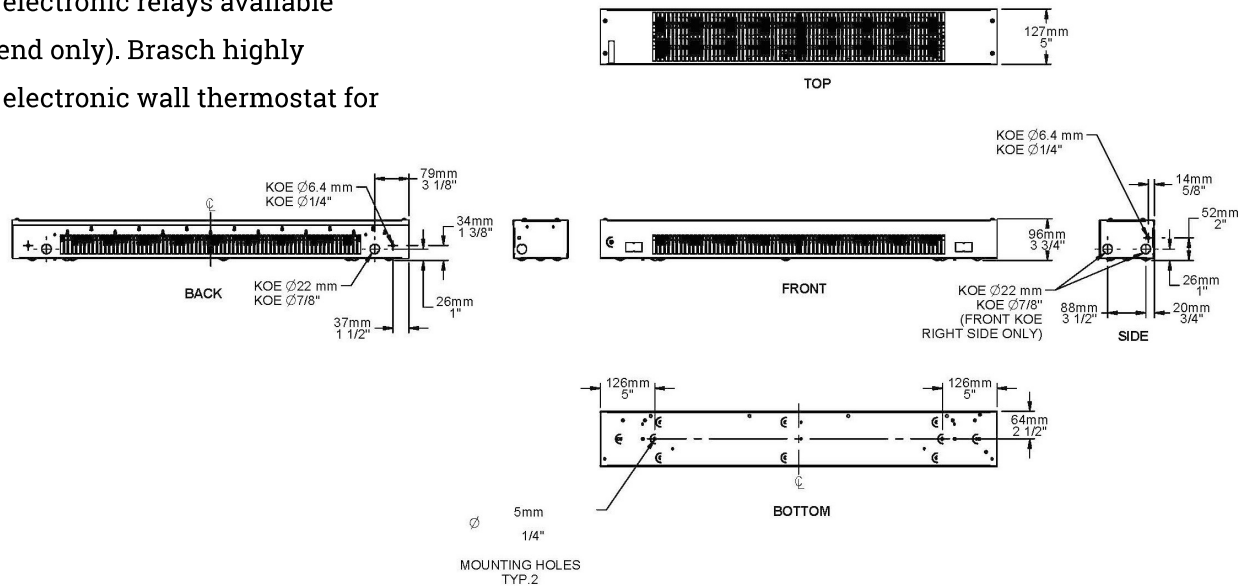
Heating Element Stainless steel tubular heating element with aluminum fins. Floating heating element on high-temperature nylon bushings reducing expansion noises. provided along the back of the cabinet for wall installation.

Construction Sturdy construction of 20-gauge steel. Linear high-limit temperature control with automatic reset. Linear high-limit temperature control with manual reset.

Control Mechanical or electronic relays available (installed on the right end only). Brasch highly recommends using an electronic wall thermostat for greater comfort.

Finish Standard color is an epoxy/polyester semi-gloss black. Optional colors (additional charge): white, almond, metallic silver, bronze, metallic charcoal, and aluminum.

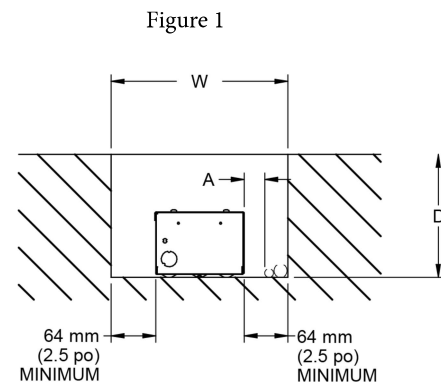
Installation Must be installed inside a trench under a floor with a compatible top trench grille (not supplied), which must cover the entire length of the heater. Please refer to the table of Models of compatible top trench grilles. 2 fixing holes in the bottom of the heater.



Models of compatible top trench grilles

Trench dimension - Figure 1							
W: 10 in. (254 mm) minimum D: 6 in. to 7 15/16 in. (153 mm a 202 mm) C: 2 1/2 in. (64 mm) minimum Price per linear foot				W: 10 in. (254 mm) minimum D: 8 in. (204 mm) minimum C: 2 1/2 in. (64 mm) minimum Price per linear foot			

Manufacturer	Grille Model	167 W/ft.	200 W/ft.	250 W/ft.	167 W/ft.	200 W/ft.	250 W/ft.
Nailor Industries www.nailor.com	49-240	✓	—	—	✓	✓	—
	49-241	✓	—	—	✓	✓	—
	49-243	✓	—	—	✓	✓	—
	49-280	✓	✓	—	✓	✓	✓
	49-281	✓	✓	—	✓	✓	✓
Price Industries www.priceindustries.com	LBP/LBPH 15B	✓	✓	—	✓	✓	✓
	LBP/LBPH 16B	✓	✓	—	✓	✓	✓
	LBP/LBPH 25C	—	—	—	✓	—	—



NOTE: Vanes or deflectors options with grille are prohibited.

SLL - 3560 - 01