

## **914B Series**

### **ARCHITECT'S AND ENGINEER'S SPECIFICATIONS\***

Furnish and install, where indicated on plans, 914B Draft Barrier convector type heaters, suitable for continuous operation, as manufactured by Brasch.

**ENCLOSURE:** Shall be 12-gauge (.080" min.) aluminum extrusion. The one-piece back and bottom shall join to the one-piece top and front utilizing Brasch's Snap-Lock design (patent pending). Both inlet and outlet air grilles shall be punched pencil-proof slots negating the need for mesh under the grille.

**SIZE:** Heaters shall be low profile (2 5/8" x 4") and available in length from 24 inches through 10 feet. Additionally, custom length cabinets up to 12 feet with single heat deck shall be furnished as specified.

**HEATING LENGTHS AND VOLTAGES:** Heater lengths, voltages and wattage capacities shall be as indicated on the plans.

**FINISH:** The top and front shall be finished with polyester powder paint or anodized. Units are available with an optional finished back.

**HEATING ELEMENTS:** The nickel-chromium heating element wire shall be encased in a steel sheath for maximum, trouble-free element life. Aluminum fins shall be pressure bonded to the steel sheath. Elements shall be centered anchored and shall float freely at each end through high-temperature Noryl bushings.

**CONTROL SECTIONS:** Control sections, finished to match heaters, shall be furnished as an optional accessory for field installation of controls, or shall be used to house factory-installed controls as specified.

**OPTIONAL BUILT-IN CONTROLS:** Thermostats, low voltage control relays, and power on/off switches, may be specified for factory installation in heaters. Thermostats and power on/off switches are accessible through the grille.

**PEDESTALS:** The heater shall be convertible for use as a self-standing unit with pedestal conversion kit. Pedestals shall be painted steel or anodized aluminum. Pedestals can either be mounted on or embedded in the floor surface, and wiring or conduit brought through the pedestal during installation.

*\*Brasch reserves the right to change specifications without prior notice.*

## Lengths

Length	2'	28"	3'	4'	5'	6'
Shipping Weight	8 lbs	8 lbs	10 lbs	13 lbs	17 lbs	20 lbs

NOTE: Cabinet available up to 12 ft. length. Custom length cabinets are priced with heater and blank to the next larger size. Backs are provided standard with no finish. For finished backs, add 10% to list price. Knockouts on back omitted by request only. All models are NON-STOCK made-to-order. When ordering, specify quantity, catalog number, voltage, wattage, optional controls, and color. Consult sales representative for lead times.

## Watts per Ft.\*

100	125
150	

## Voltages\*

120	208	240
277	347	600

\*Specs vary by length. Refer to the submittal sheet for full details.

## Optional Accessories:

CATALOG NO.*	DIMENSIONS (W x H x L)	SHIP WT.
BIH-ADBS1B	2 5/8" x 4" x 2'	4 lbs
BIH-ADBS2B	2 5/8" x 4" x 28"	7 lbs
BIH-ADBS3B	2 5/8" x 4" x 3'	9 lbs
BIH-ADBS4B	2 5/8" x 4" x 4'	12 lbs
BIH-ADBS5B	2 5/8" x 4" x 5'	16 lbs
BIH-ADBS6B	2 5/8" x 4" x 6'	19 lbs

NOTE: Blank section grilles are not punched unless requested. Additional sections available for cabinets up to 10 ft. length.



Bottom inlet unit is only 2 5/8 in. wide by 4 in. tall. Can be mounted to wall (2 in. above floor) or in front of window mounted on pedestals.



Hollow pedestals are 3 in. tall and allow concealed wiring access when stubbed through concrete floors.

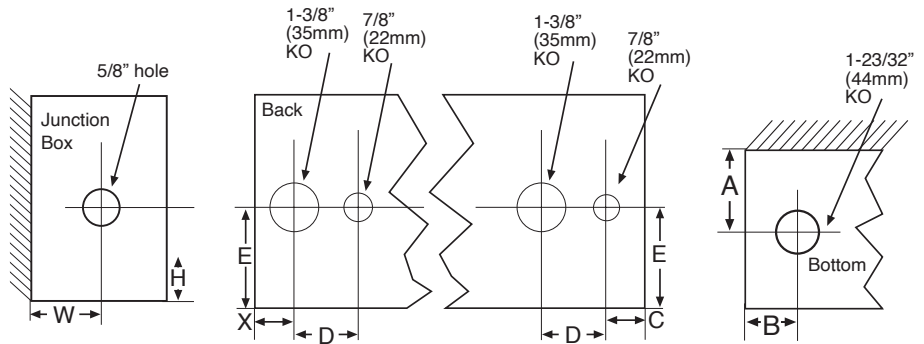
CATALOG NO.*	DESCRIPTION	ADDITIONAL SPACE REQUIRED	SHIP WT.
BIC-ADECL	End Cap - Left	1/8"	1 lbs
BIC-ADECR	End Cap - Right	1/8"	1 lbs
BIH-ADICB	Inside Corner-Bottom In	8-1/2"	5 lbs
BIH-ADOCB	Outside Corner-Bottom In	8-1/2"	5 lbs
n/a	135° Inside Corner-Bottom In	5"	4 lbs
n/a	135° Outside Corner-Bottom In	5"	4 lbs
BIC-ADSP	Splice Plate	0-1/4"	1 lbs
BIC-ADFL3	Filler Section 3 in.	0-3"	1 lbs
BIC-ADFL6	Filler Section 6 in.	3-6"	1 lbs
BIC-ADFL9	Filler Section 9 in.	6-9"	1 lbs
BIC-ADFL12	Filler Section 12 in.	9-12"	1 lbs
BIC-ADFL18	Filler Section 18 in.	12-18"	1.5 lbs
BIC-ADFL24	Filler Section 24 in.	18-24"	1.5 lbs
BIH-ADDRB	Receptacle Section-Bottom In Must use 1 ft. Blank Section	12"	2 lbs
BIP-ADPK3A**	Architectural Pedestal	-	2 lbs
BIB-VVSO1***	Stand-Off Bracket	-	1 lbs

\*Add suffix color code (i.e. -W for white, -B for black, etc.), -C for clear anodized, -B for bronze anodized. \*\* One pedestal. Two pedestals required on units up to 10 ft. and three required on units over 10 ft.  
\*\*\* All Stand-off Brackets come standard as Beige.

## Dimensions and Clearances:

Height	4" 101.6mm
Width	2 5/8" 67mm
Length	24"-12' 610mm-3658mm

A	1.27"	32mm
B	2.00"	51mm
C	1.63"	41mm
D	1.37"	35mm
E	1.53"	39mm
H	1.81"	46mm
W	1.25"	32mm
X	1.00"	25.4mm



Pedestal placement and KO's shown are for standard units. Custom enclosures and/or heat decks will have pedestal placement and KO's in various locations. Consult factory.

## Optional Built-In Controls:

Suffix*	OPTIONAL BUILT-IN CONTROLS	USE CASE(S)	RATINGS & DESCRIPTIONS
T	Single-Pole Thermostat	Ideal for localized control	Rated 24 amps @ 120-240 VAC and 22 amps @ 277 VAC. Pilot duty rating of 125 VA (all voltages). 60-120°F temperature range; adjustable through outlet grille-tamper-resistant. (See Note B) Not available on three-phase heaters.
DS	Power On/Off Switch	Ideal for servicing	Double-pole, rated 20 amp @ 120-277 VAC. (See Note A) For three-phase heaters and single-phase heaters over 20 amps specify two.
PR**	Power Relay	Ideal for multiple heater connections or BMS / EMS connections	Single-pole magnetic relay, rated 18 amps @ 120-600 VAC. (See Note C) Specify control voltage. Rated 24 amps @ 120-240 VAC and 22 amps @ 277 VAC. Pilot duty rating of 125 VA — all voltages (See Note C & D)

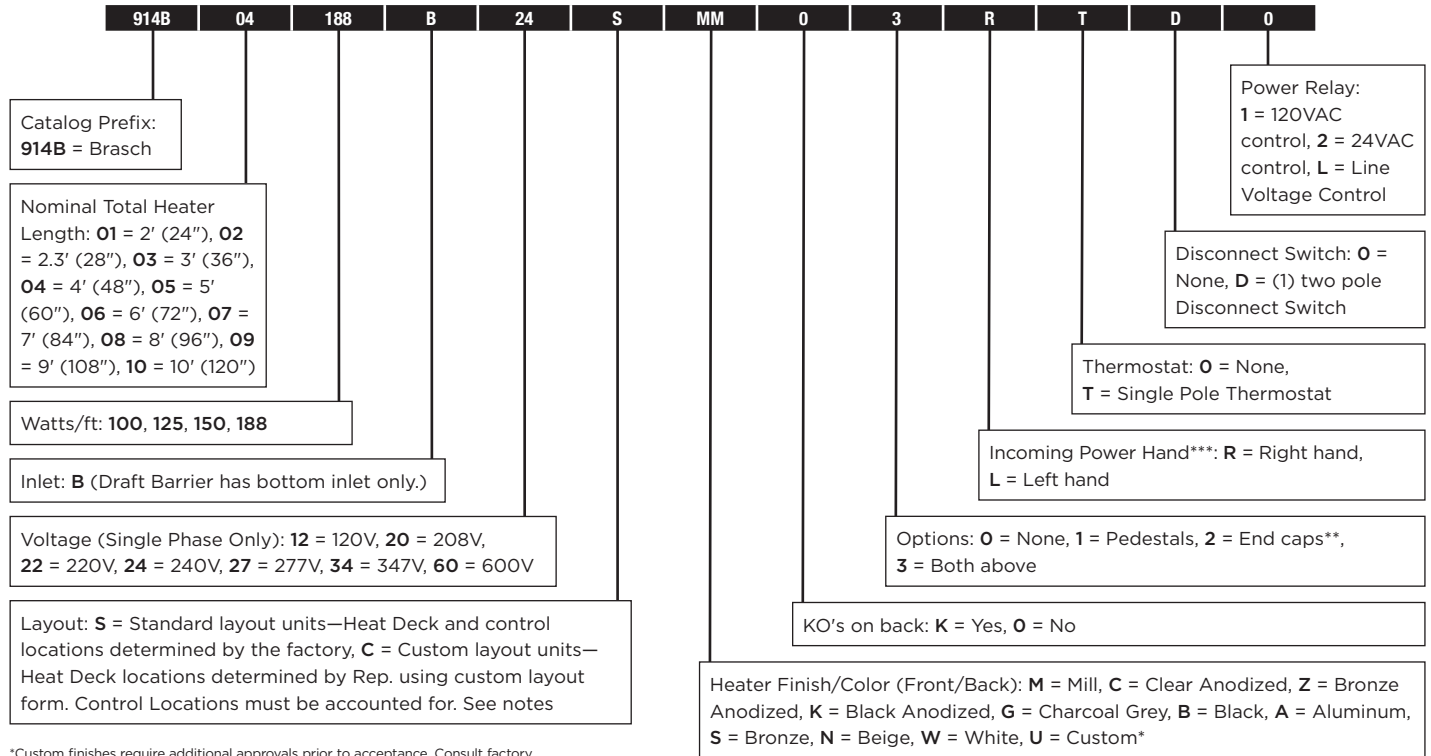
\* Addition To Basic Catalog No.

\*\* See Note D

NOTE: A. For single-phase loads over 20A and all three-phase loads, specify (2) power on/off switches. B. This control option is not available on single-phase heaters over 24 amps (22 amps on 277 VAC). C. Specify holding coil voltage where applicable. D. Add 4 in. to the cabinet length.

## How to Order

Example:



\*Custom finishes require additional approvals prior to acceptance. Consult factory.

\*\*End caps (2) will have same finish as Front Cover. Pedestal qty will vary based on length of heater. All options will ship in same carton as the heater ordered with.

\*\*\*Due to space constraints in the junction box the Disconnect switch and Thermo stat must always be mounted opposite of each other. Control Hand/Incoming Power connection is determined by the hand of the DS/Thermostat when facing the heater.

Contact Brasch Sales Representative for additional configuration details

No matter the industry or application, Brasch has a robust portfolio of innovative, reliable, high-performance comfort heating and ventilation solutions for all your heating needs.